

TRADITIONAL **HEATER** **INSTALLATION** OUTDOOR SAUNA

Instruction Manual

Please refer to
the heater
manual for
specific wiring
instruction.

Heavenly Heat
Saunas



OVERVIEW

1. Install junction box.
2. Direct connect junction box to electrical panel.
3. Run 3/4 in. metallic conduit from junction box to heater.
4. Mount heater.
5. Mount thermostat bulb.

TABLE OF CONTENTS

Requirements	03
Electrician to Provide	03
Heater Connection Picture	03
Exterior	04
Step: 1	04
Step: 2	04
Heater Mounting	05
Step: 1	05
Step: 2	05
Step: 3	05
Step: 4	06
Step: 5	06
Step: 6	07
Step: 7	07
Thermostat Bulb	08



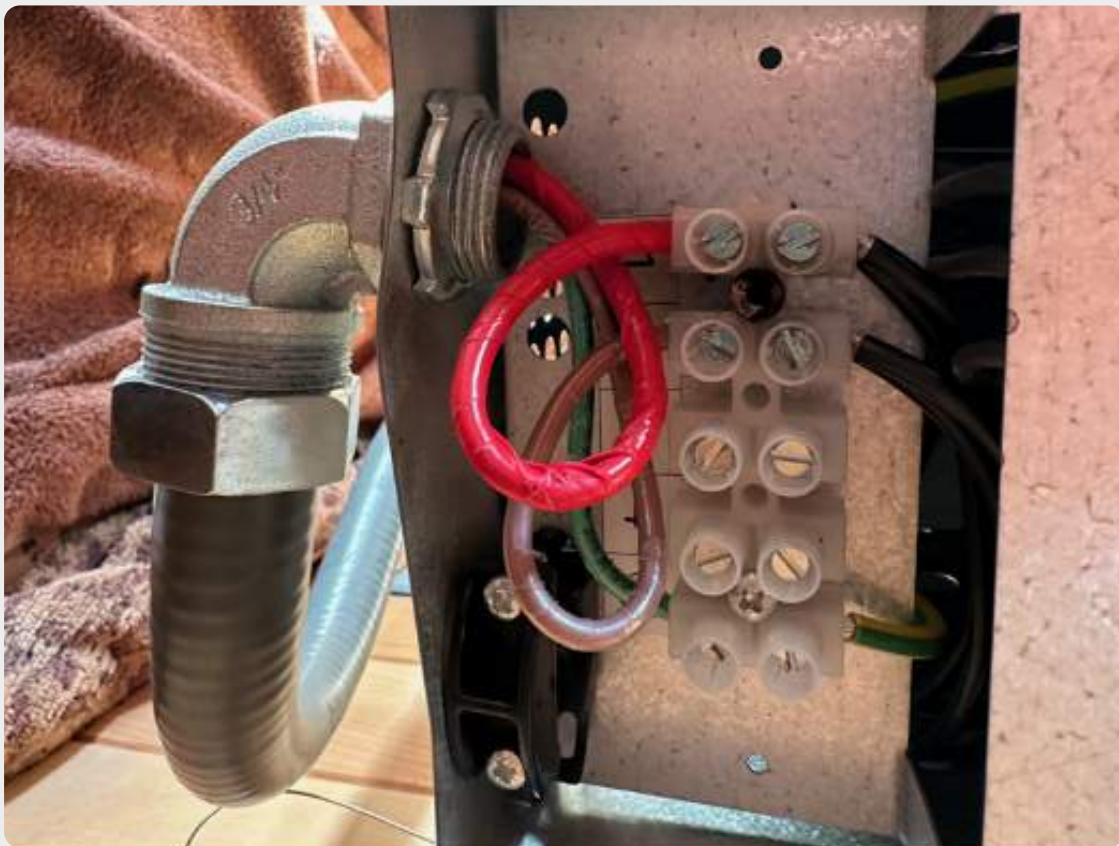
REQUIREMENTS

1. It needs a 2 pole 30 amp non-GFCI breaker.
2. Run (2) #10 copper wires + ground to heater.
3. Wires connect to heater terminals 1 and 2.

ELECTRICIAN TO PROVIDE

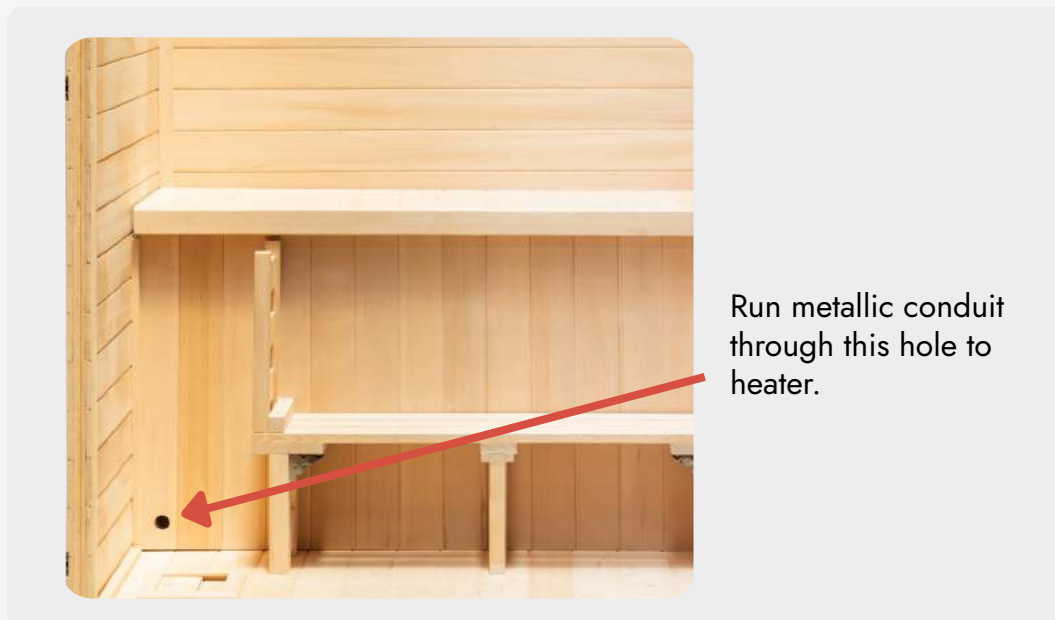
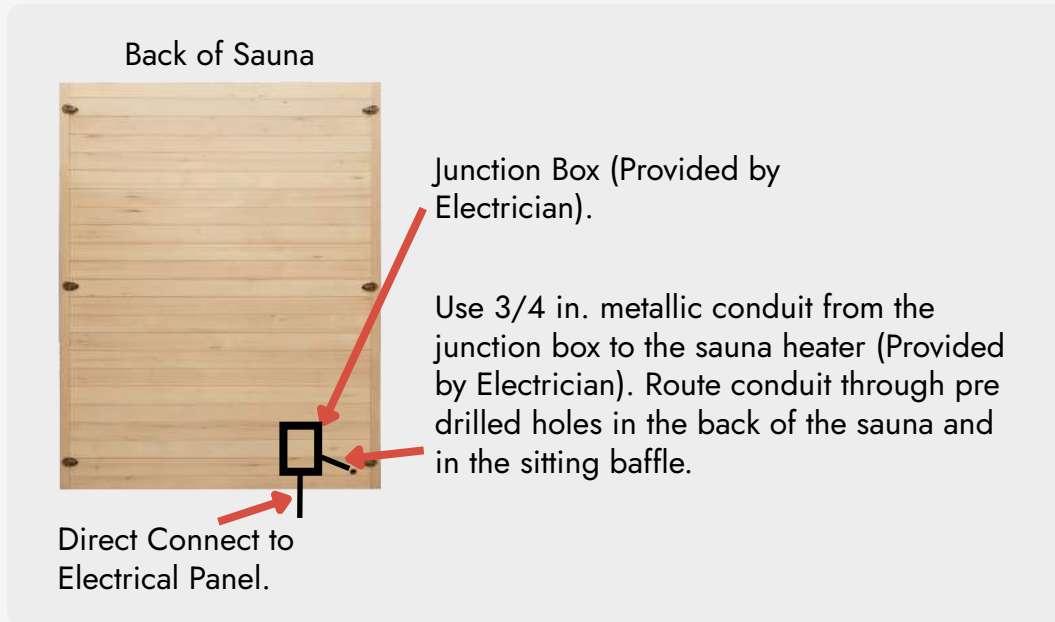
1. Junction box.
2. 3/4 in metallic conduit.
3. All wiring external sauna heater.

Heater Connection



EXTERIOR

1. Install Junction box (provided by electrician) on outside of the back wall of the sauna next to the predrilled hole.
2. Use 3/4 in. metallic conduit from the junction box to the sauna heater (provided by electrician). Route metallic conduit through pre-drilled holes on the back wall and sitting baffle.



HEATER MOUNTING

1. Remove 2 screws to release black mounting plate from silver mounting bracket.



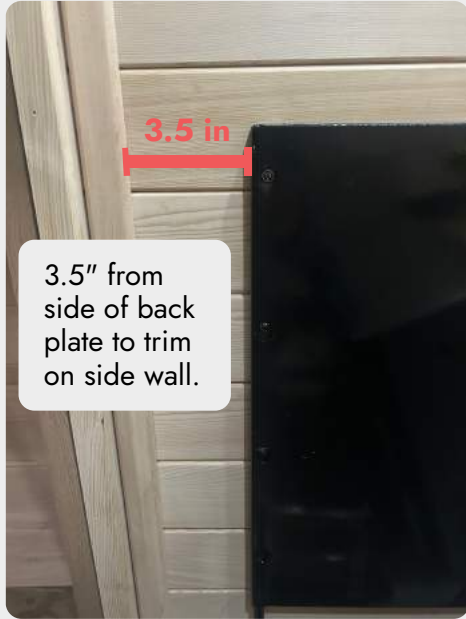
2. Slide black mounting plate away from heater.



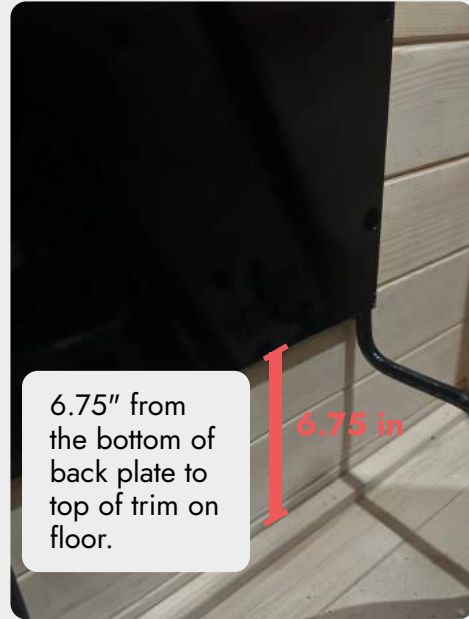
3. Remove black hanging bracket from bottom of heater.



4. Mount black hanging bracket to wall with screws included in warning sign bag that was in heater box.



3.5 inches from side of back plate to trim on side wall.

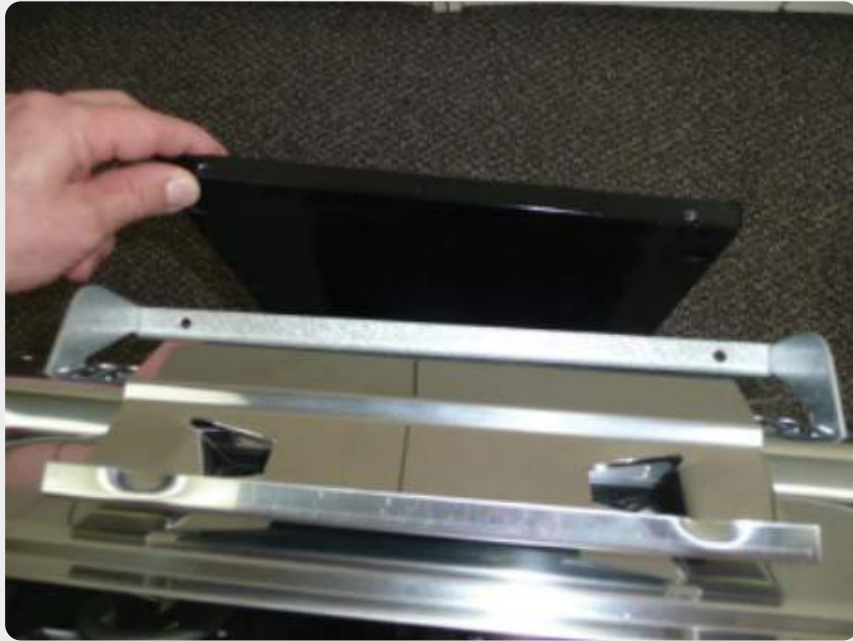


6.75 inches from the bottom of back plate to top of trim on floor.

5. Once mounting plate is attached to the wall, the heater can be placed back on the bracket bars by inserting the bar ends back into the holes in the bottom of the heater.



6. Place the silver mounting bracket back on top of the heater.



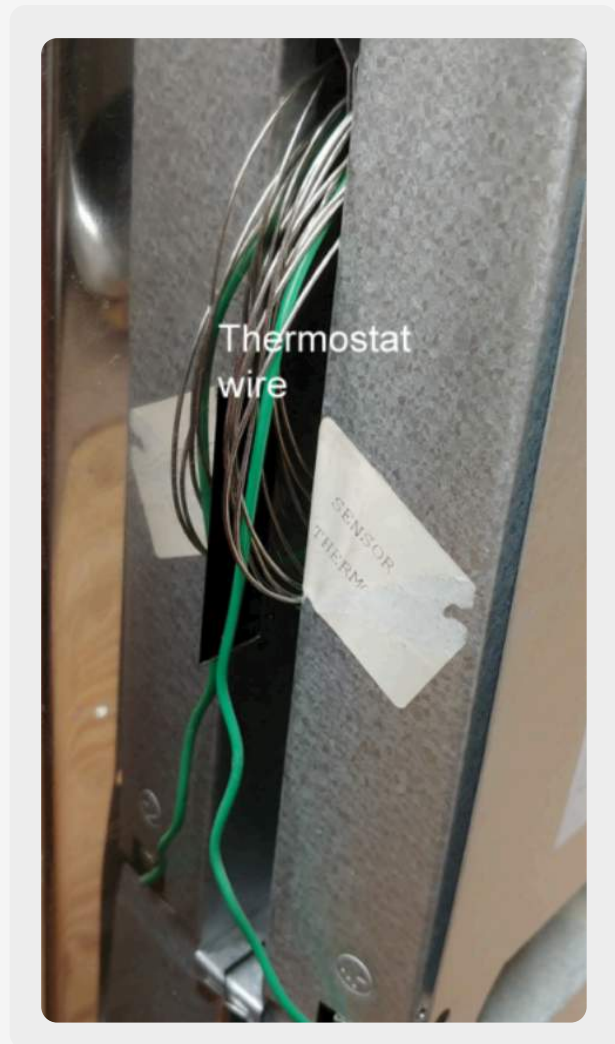
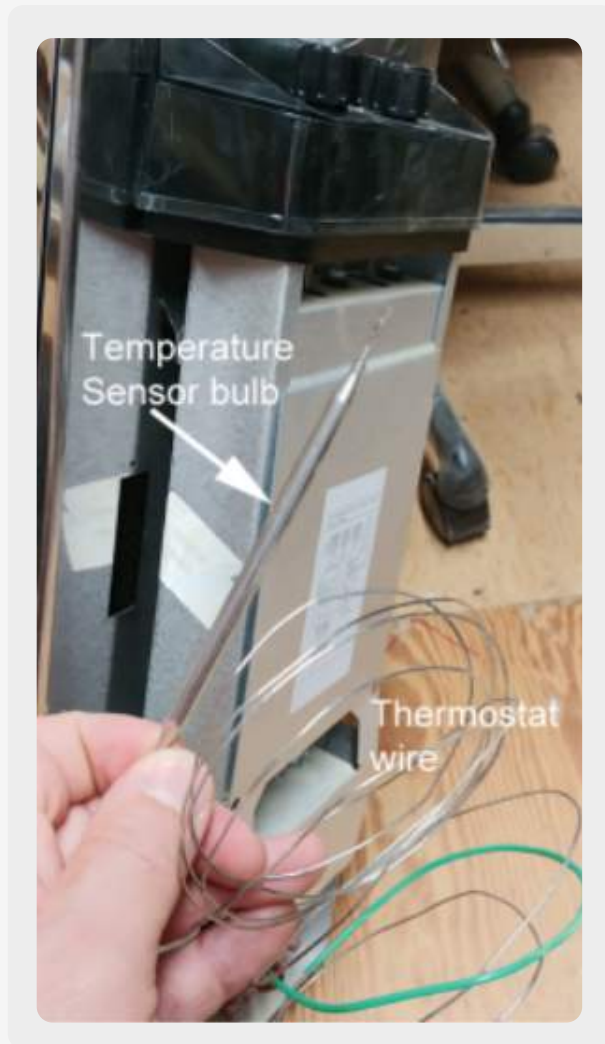
7. Screw the mounting bracket back to the black mounting plate.



THERMOSTAT BULB

The KV Topclass heater has a temperature sensor bulb attached to a coil of wire. This bulb needs to be run up the face of the sauna wall ideally 12" down from the ceiling. A mounting bracket is included in the heater box, usually attached to the heating elements with a zip tie. To locate the sensor bulb remove the side cover under the control knobs. The thermostat bulb connected to a coil of wire is tucked between the control consul and the main heater body.

Depending on if you have controls on the left or right side of the heater the coil of wire could be found at the front of the heater or hidden on the back side of the heater against the wall.



Run the thermostat wire on the underside of the lip of the bench and cover the wire with the wooden cover provided with the heater. Then run the wire between the 2 Infrared heaters on the opposing side wall and mount the thermostat 12"-24" from the ceiling of the sauna.



1-928-235-8081

support@heavenlyheatsaunas.com

543 E Andy Devine Ave, Kingman,
AZ 86401, United States

Copyright © 24
Heavenly Heat Saunas.
All rights reserved.



Heavenly Heat

Saunas

